

FIXED-TILT

FLEXRACK
by **qcells**

FLEXRACK Series G3-X

Self-Squaring Fixed Tilt Racking

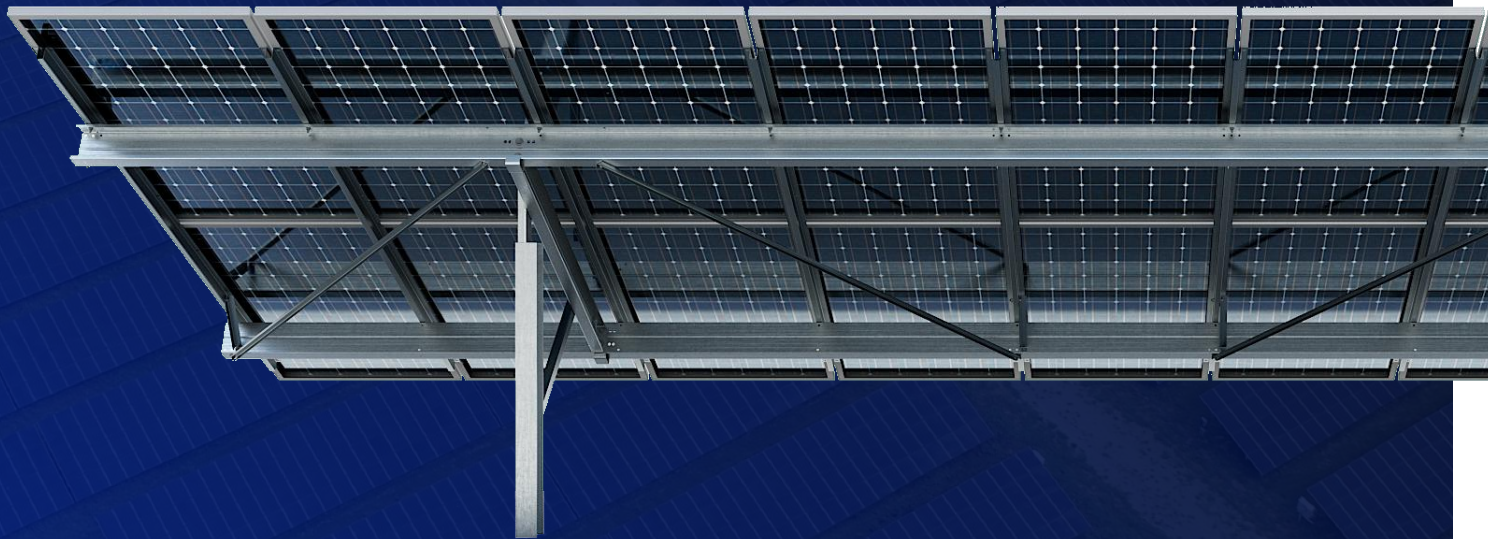
Over 1,000 successfully installed fixed tilt projects

Utilization of high strength steel

Self-squaring rack allows for no hassle module installation

Optimal design for bifacial modules

Generous construction tolerances built into the design



Get in contact with the
FLEXRACK by Qcell team today!

216-998-5988 | INFO@FLEXRACK.COM | FLEXRACK.COM



Ground mount G3-X fixed-tilt
compatible with all modules

BEST-IN-CLASS DESIGN

Design features

Available in Portrait and Landscape

Self-squaring

Availability in any table configurations
and tilt angles

Compatibility for all modules including
LFM and FS6

MATERIALS	
Hardware	Mounting hardware is Magni 560, HDG coated standards. Stainless available upon request.
Racking Structure	G 90 galvanized steel standard. Higher coatings available for high corrosion areas
Foundations	Hot Dipped Galvanized, Pre-Galvanized G90
DESIGN	
Orientation	Landscape or Portrait
Tilt Angle	5° - 45° (custom tilts can be accommodated)
Adjustability	20% E/W Landscape, 20% E/W Portrait
Wind Speed	Any wind speed including hurricane prone regions
Snow Load	Racking system can designed for any snow load
Module Accommodation	Any module including 60 cell, 72 cell, large format modules, and thin filmed modules
Module Mounting Type	Direct bolt to vertical rails (bonded connection)
Foundation Accommodation	W-Section, SmartPost, Round Post, Helical Pier, Ballast, Ground Screw
Warranty	20 Years
CERTIFICATIONS AND TESTING	
UL Compliance	UL 2703 (Issue 2) compliant.
Wind Tunnel Testing	CPP third party testing laboratory
Structural Connection Testing	Accutek Testing Laboratory
Code Compliance	Racks are designed using local environmental loads (wind, snow, and seismic) per the governing and/or local building codes
Finite Element Modeling	Risa 3D
Engineering	PE stamped drawings and calculations, works directly with third party independent review for each project
SERVICES	
Geotechnical Engineering	Field investigation and engineering, laboratory testing, engineering analysis, push/pull tests, foundation design
Structural/Civil Engineering	Preliminary investigation, engineering, layout
Training	Onsite installation training at no additional cost
Installation	Foundation, racking, module, and module prewiring

50 YEARS & OVER 4 GIGAWATTS

FLEXRACK by Qcells is an integrated solar company that offers custom-designed, fixed tilt ground mount and single-axis solar tracking systems in the commercial and utility-scale solar mounting industries. FLEXRACK also offers full services, including engineering, geotechnical, pullout testing, field, and layout design services to address the actual site conditions of a project site. FLEXRACK has completed over 4 GW of solar racking installations in over 40 U.S. states and across the globe.